

Sedimentological study of late Palaeozoic clastic and carbonate core 7120-12-4, SW Barents Shelf

This study is based on the three cored intervals from the Ugle, Røye and Ørret Formations supported by detailed microfacies and diagenetic descriptions and interpretations from thin sections. Depositional, diagenetic and pore types were quantified by point counting. A suite of photomicrographs and scanned thin sections are also included.

The study comprises:

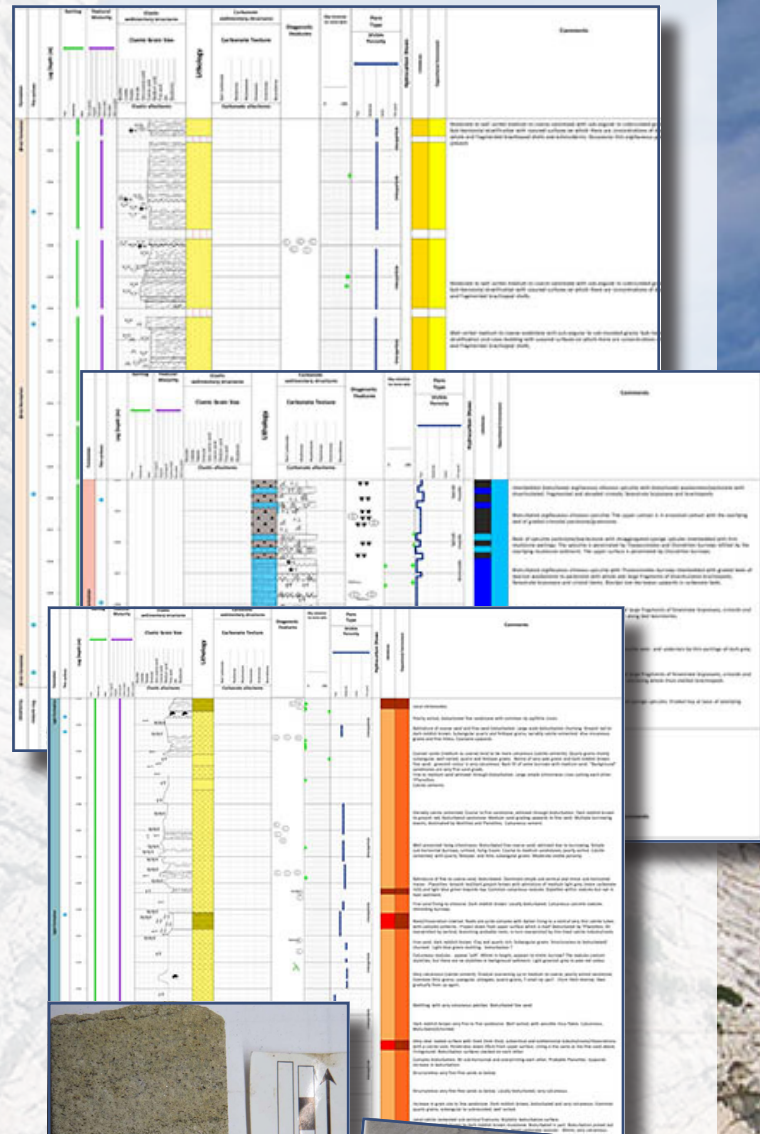
- Detailed descriptions of core facies and microfacies interpretations of depositional environment and high resolution sequence stratigraphy.
- Detailed descriptions of diagenesis, reservoir quality and porosity.
- Fluvial setting of Ugle Formation.
- Bioclastic and spiculitic carbonate ramp setting of Røye Formation.
- High energy marine siliciclastic sand body represented by the Ørret Formation.
- Note on Sr isotope stratigraphy of the Røye and Ørret Formations.

Data package includes:

- Cores are presented in CreCAD and pdf format, together with digital core data on excel spread sheets.
- Quantitative petrographic data on excel spread sheets.

Core workshop:

- A core workshop held at the NPD in Stavanger can be arranged at additional cost.



Further information: Julie Dewit
julie@cambridgecarbonates.co.uk